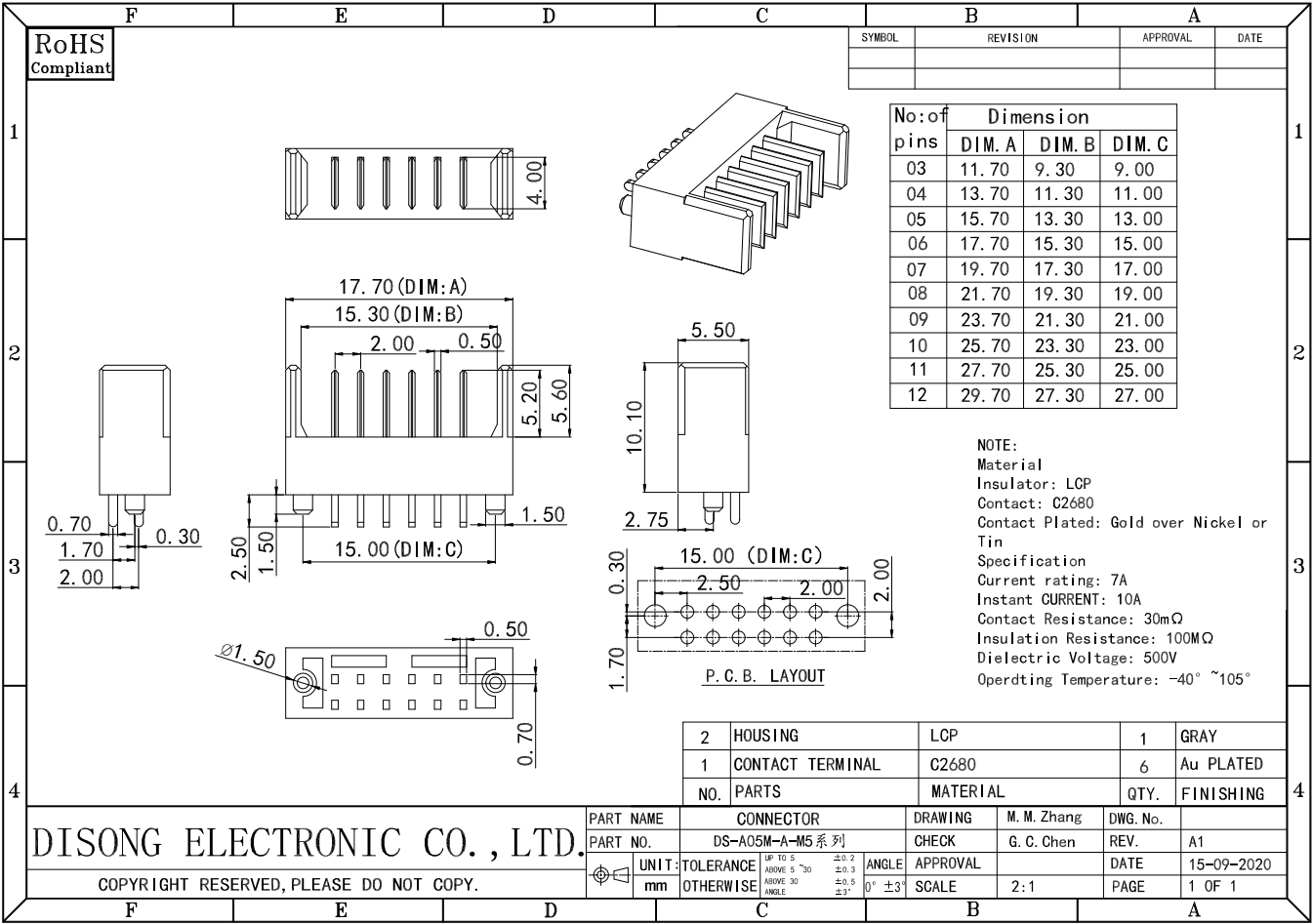


RoHS
Compliant

SYMBOL	REVISION	APPROVAL	DATE

No. of pins	Dimension		
	DIM. A	DIM. B	DIM. C
03	11.70	9.30	9.00
04	13.70	11.30	11.00
05	15.70	13.30	13.00
06	17.70	15.30	15.00
07	19.70	17.30	17.00
08	21.70	19.30	19.00
09	23.70	21.30	21.00
10	25.70	23.30	23.00
11	27.70	25.30	25.00
12	29.70	27.30	27.00

NOTE:
Material
Insulator: LCP
Contact: C2680
Contact Plated: Gold over Nickel or Tin
Specification
Current rating: 7A
Instant CURRENT: 10A
Contact Resistance: 30mΩ
Insulation Resistance: 100MΩ
Dielectric Voltage: 500V
Operdting Temperature: -40° ~105°



2	HOUSING	LCP	1	GRAY
1	CONTACT TERMINAL	C2680	6	Au PLATED
	NO. PARTS	MATERIAL	QTY.	FINISHING

DISONG ELECTRONIC CO., LTD.

COPYRIGHT RESERVED, PLEASE DO NOT COPY.

PART NAME	CONNECTOR		DRAWING	M. M. Zhang	DWG. No.
PART NO.	DS-A05M-A-M5 系列		CHECK	G. C. Chen	REV. A1
UNIT: mm	TOLERANCE	UP TO 5° ±0.2 ABOVE 5° TO 30° ±0.3 OTHERWISE ±0.5 ANGLE 0° ±3°	APPROVAL	SCALE	DATE 15-09-2020
				2:1	PAGE 1 OF 1