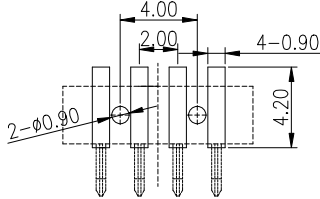
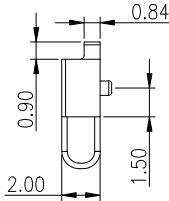
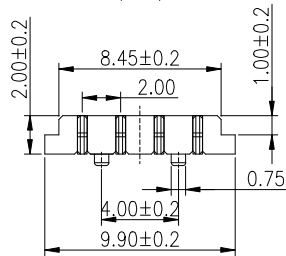
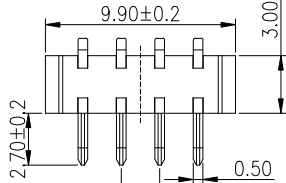
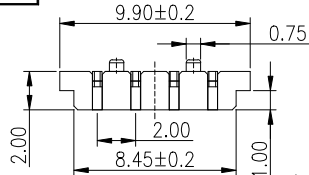


RoHS
Compliant

SYMBOL	REVISION	APPROVAL	DATE



RECOMMENDED P.C.B LAYOUT
TOP VIEW (.XX±0.05)

NOTE:
Material
Insulator: LCP
Contact: C2680
Contact Plated: Gold over Nickel or Tin
Specification
Current rating: 3A
instant CURRENT: 5A
Contact Resistance: 30mΩ
Insulation Resistance: 100MΩ
Dielectric Voltage: 500V
Operdting Temperature: -40°~105°

2	HOUSING	LCP	1	GRAY
1	CONTACT TERMINAL	C2680	4	Au PLATED
NO.	PARTS	MATERIAL	QTY.	FINISHING

DISONG ELECTRONIC CO., LTD.

COPYRIGHT RESERVED, PLEASE DO NOT COPY.

PART NAME	CONNECTOR		DRAWING	Y.C.Zhang		DWG.No.	
PART NO.	A00M-4P-R5		CHECK	G.C.Chen		REV.	A1
UNIT: mm	TOLERANCE	UP TO 5	APPROVAL	DATE		01-05-2020	
	OTHERWISE	ABOVE 30		SCALE	PAGE		1 OF 1
		±0.2 ±0.3 ±0.5 ±.3	ANGLE	2:1			
		0°±3'					

F E D C B A