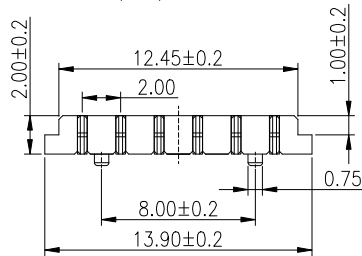
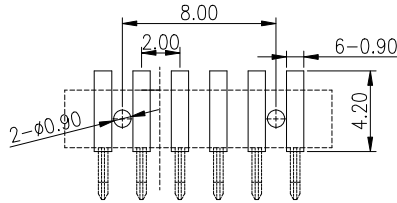
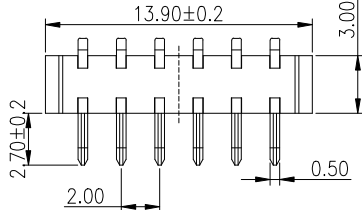
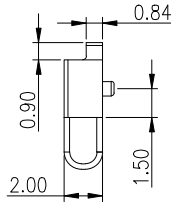
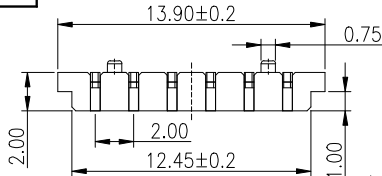


**RoHS
Compliant**

SYMBOL	REVISION	APPROVAL	DATE



RECOMMENDED P.C.B LAYOUT
TOP VIEW (.XX±0.05)

NOTE:
Material
Insulator: LCP
Contact: C2680
Contact Plated: Gold over Nickel or Tin
Specification
Current rating: 3A
instant CURRENT: 5A
Contact Resistance: 30mΩ
Insulation Resistance: 100MΩ
Dielectric Voltage: 500V
Operating Temperature: -40°~105°

2	HOUSING	LCP	1	GRAY
1	CONTACT TERMINAL	C2680	6	Au PLATED
NO.	PARTS	MATERIAL	QTY.	FINISHING

DISONG ELECTRONIC CO., LTD.

COPYRIGHT RESERVED, PLEASE DO NOT COPY.

PART NAME	CONNECTOR		DRAWING	Y.C.Zhang	DWG.No.	
PART NO.	A00M-6P-R5		CHECK	G.C.Chen	REV.	A1
UNIT: mm	TOLERANCE	UP TO 5 ABOVE 5 30	APPROVAL		DATE	01-05-2020
	OTHERWISE	±0.2 ±0.3 ±0.5 ±.7	SCALE	2:1	PAGE	1 OF 1

F

E

D

C

B

A