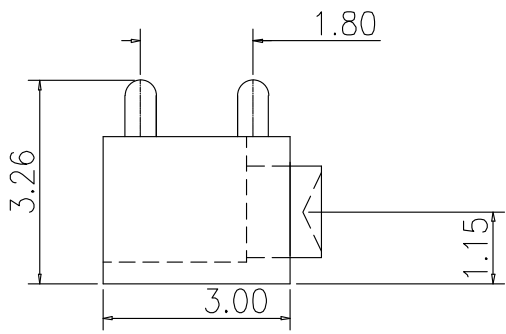
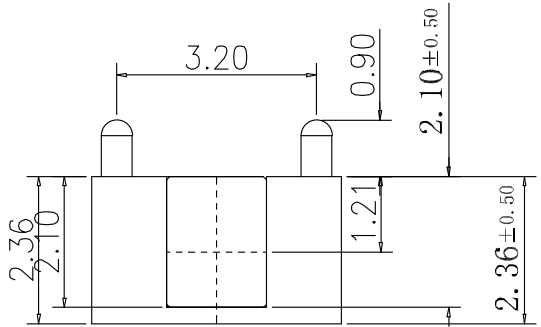
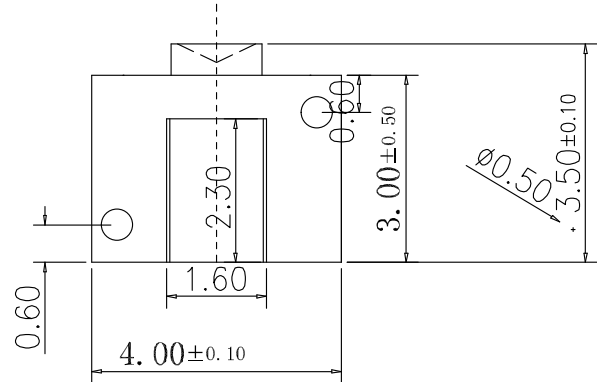


RoHS
Compliant

SYMBOL	REVISION	APPROVAL	DATE

Note:

- 1: Material (材料)
Housing: PA46 (胶芯:PA46)
Plunger: Brass C3604 (针轴: 国标黄铜 C3604)
- 2: Plating (电镀)
Plunger: 2u' Au over 80~100u' Ni (针轴 镀金2u', 镍底80~100u')
- 3: Electrical (电气特性)
Rated Current & Voltage: DC 12v:2A (额定电压&电流 直流12v:2A)
Contact Resistance: 50 mohm Max. at working height.
接触电阻: 接触最大阻抗30毫欧 (接触工作高度停止状态下)
- 4: Mechanical (机械性能):
Full stroke: 10000cycles (min) 寿命10000次以上)



2	HOUSING	PPA	1	BLACK
1	CONTACT TERMINAL	C70350	2	Au PLATED
NO.	PARTS	MATERIAL	QTY.	FINISHING

东莞市迪松电子科技有限公司

COPYRIGHT RESERVED, PLEASE DO NOT COPY.

PART NAME		CONNECTOR		DRAWING		DWG. No.	
PART NO.		PG-0-102		CHECK		REV.	
UNIT:		TOLERANCE	UP TO 5 ±0.2	ANGLE	APPROVAL	DATE	
mm		OTHERWISE	ABOVE 5 ~30 ±0.3	0° ±3°	SCALE	PAGE	
			ABOVE 30 ±0.5		2:1	1 OF 1	
			±3°				