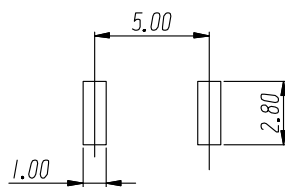
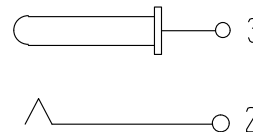


PCB LAYOUT  
TOP VIEW (TOLERANCE:±0.05)



SCHMATIC



技术特性:

使用条件:  $-30 \sim 70^{\circ}$   
 额定负荷: DC 30V 3A  
 接触电阻:  $\leq 0.02\Omega$   
 绝缘电阻:  $\geq 100M\Omega$  DC250V  
 耐压: AC250V(50Hz) /min  
 插拔力: 3~15N  
 寿命: 5000次

5	插针	1	H59黄铜棒	铜锡
4	铜套	1	铜	铜锡
3	弯片	1	H62黄铜带(φ) δ=0.60mm	铜锡
2	弹片	1	65Mn 铍铜带 d=0.40mm	铜锡
1	底座	1	PA66	黑
序号	名称	数量	材料	备注

GENERAL TOLERANCES			
0.X	±0.30	X.°	±3°
0.XX	±0.20		
0.XXX	±0.10	X.X°	±1°
UNIT	SIZE	SCALE	
MM	A4	1:1	

DRAWN		C	TITLE: 电源插座
DESIGN		PART NO.	DC-022D
CHECKED		PRODUCT NO.	
APPROVED		DRAWING NO.	
		UNIT: mm	SCALE: 1:1
		REV: 01-1	SHT: 10F1

迪松电子

ECN NO.	REV	DATE	DESCRIPTION	MDF'D	APP'D
	01	2021.12.22	NEW DRAWING RELEASE		