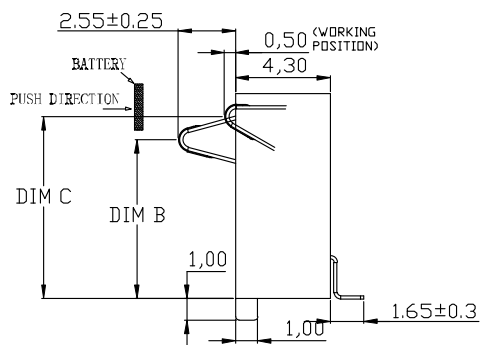
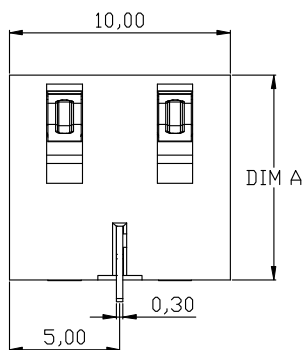


RECOMMENDED PCB LAYOUT
TOP VIEW (. XX ± 0.05)



性能:

额定电流: 3.0A

额定电压: 12V

耐电压: 500V

接触电阻: 30m Ω MAX

绝缘电阻: 500M Ω

工作温度: -40℃ ~ +85℃

塑件 (材质): LCP黑色

接触点 (材质): 铜合金, 触点镀金3U"

PART NO.	DIM A	DIM B	DIM C
BC-2-251-C01	8.0	5.70 ± 0.3	6.85 ± 0.3
BC-2-251A-C01	9.25	6.95 ± 0.3	8.10 ± 0.3
BC-2-251B-C01	10.50	8.20 ± 0.3	9.35 ± 0.3

NO.	PARTS	MATERIAL	QTY.	FINISHING
2	HOUSING	LCP	1	BLACK
1	CONTACT TERMINAL	PHOSPHOR BRONZE	3	Au PLATED

DISONG ELECTRONIC CO., LTD.

COPYRIGHT RESERVED, PLEASE DO NOT COPY.

PART NAME	CONNECTOR	DRAWING	G.B.Wu	DWG.No.	DS-BC-86
PART NO.	BC-2-251 251A 251B-C01	CHECK	Q.L.Dai	REV.	A0
UNIT : mm	TOLERANCE : UP TO 5 ±0.2, ABOVE 5 30 ~ ±0.3, ABOVE 30 ±0.5, OTHERWISE ±0.3	APPROVAL	ANGLE : 0°~3'	DATE	03-09-2012
		SCALE	2:1	PAGE	1 OF 1